

The new youth venue will cost



... £600,000, including the acquisition of adjacent land and all building and fit-out costs and internal re-configuration of the whole basement level (600m²)

Planning Permission has been received so that, subject to having the funding in place, we hope to start work in early 2012 with completion later that year.

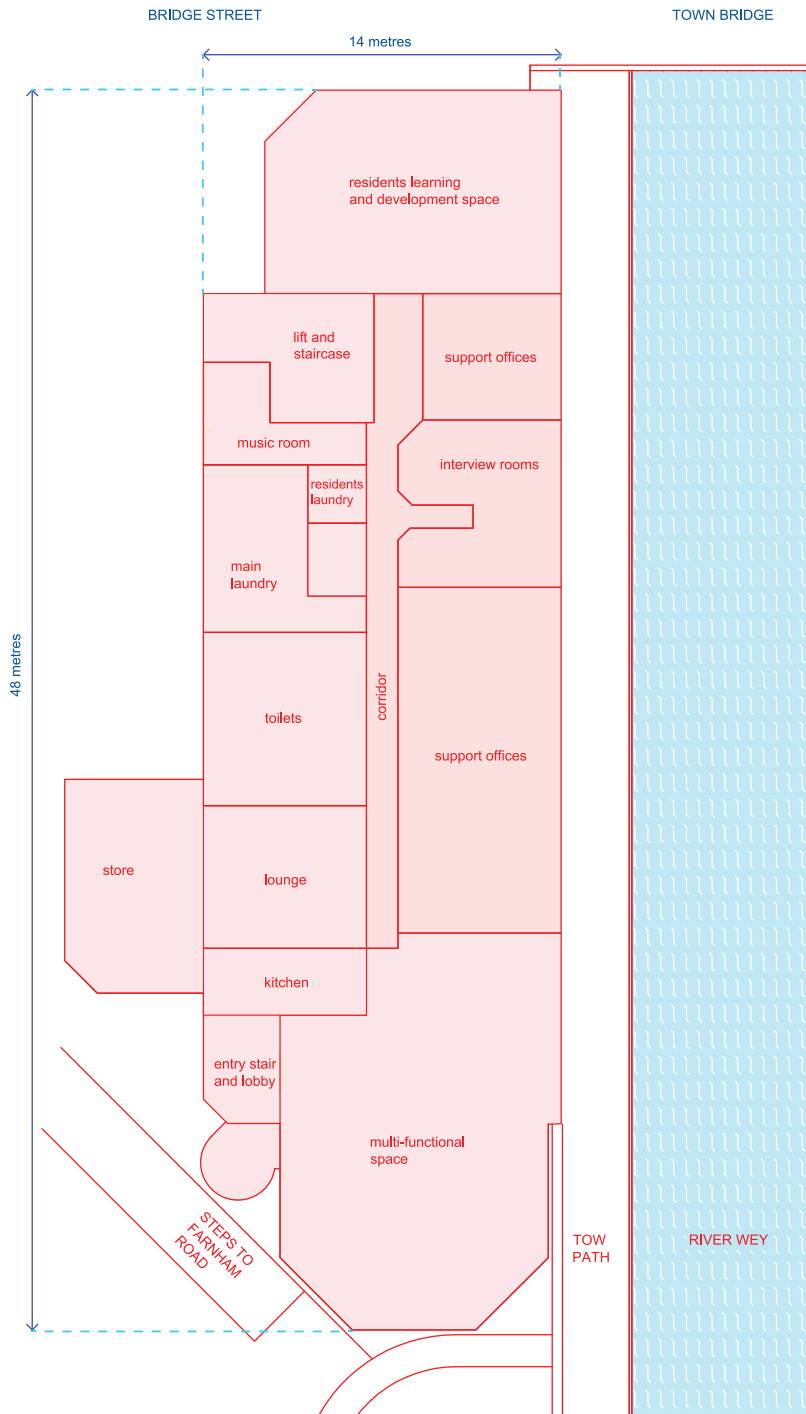
Guildford YMCA is a stand alone local charity. It has committed £100,000 to the project from its own reserves. This is the level considered prudent by its Board, having regard to its trading projections and foreseeable commitments.

Therefore our Fundraising target is £500,000, which we aim to raise by early 2012.



Building Plan

Basement level of the Y Centre,
Bridge Street, Guildford



Guildford

YMCA